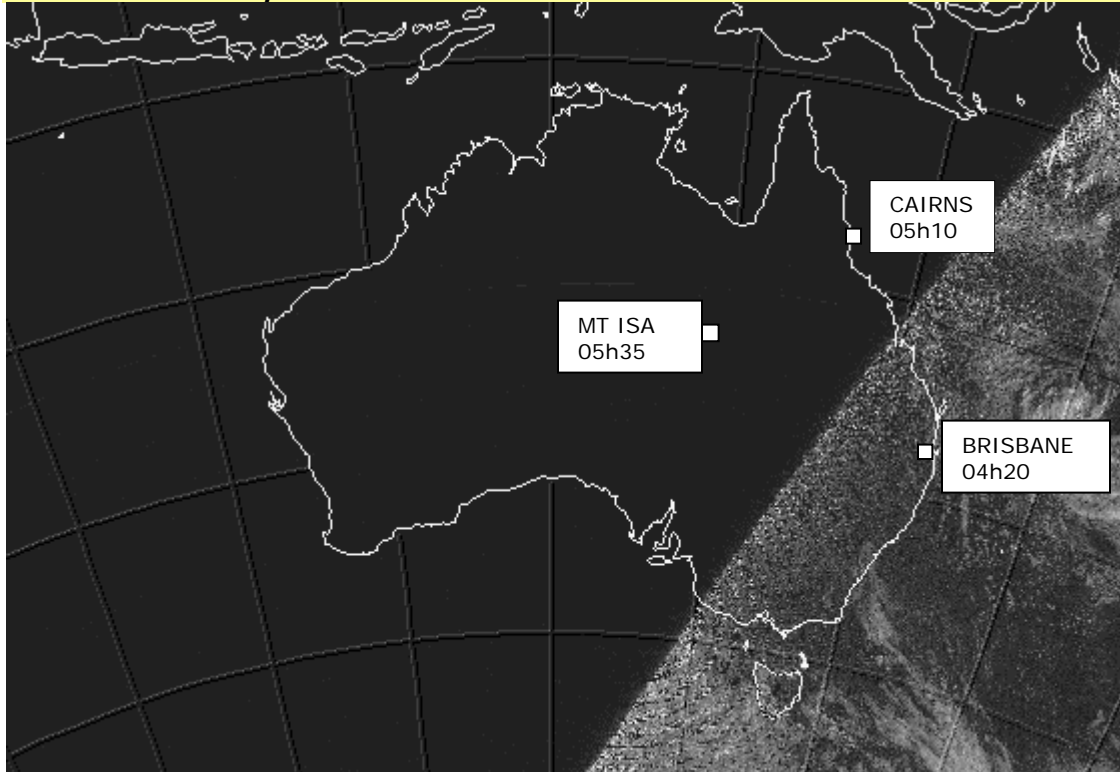


# Daylight Saving in South East QLD

In **winter** the sun rises in a line parallel to the Queensland coast with the result that the coastal cities have sunrise at much the same time. **In summer the sun rises in a line parallel to the NSW coast with the result that the southeastern corner of Queensland has sunrise even earlier in relation to the rest of the state than would be expected from its eastern location.**



**Satellite image on December 8<sup>th</sup>, 2006 at 5:10AM (Queensland time) - Brisbane has had light for 50 minutes but morning twilight is just starting in Cairns and is still 25 minutes away in Mount Isa. Morning twilight is 75 minutes earlier in Brisbane than Mount Isa.**

[www.daylightsavingseq.com.au](http://www.daylightsavingseq.com.au)

This research website for the general public to access shows how:

- South East Queensland (SEQ) has the **earliest morning twilight** of any region in Australia (except Tasmania for two months in mid-summer).
- **Two time zones work well** in 15 states and provinces in the USA and Canada.
- There are **significant energy and road safety benefits** for SEQ with daylight saving, which offer flow on benefits to regional Queenslanders.
- Daylight saving in SEQ will have **minimal, if any, effect** on evening temperatures, afternoon heat for children returning from school and UV exposure.